



# The Eco-Friendly Energy of the Future

EQUIPMENT, TECHNOLOGY PROVIDER & EQUITY PARTNER

**Dongturbo Electric Company Ltd.**

# COMPANY INFORMATION

## Dongturbo Electric Company Ltd. Profile

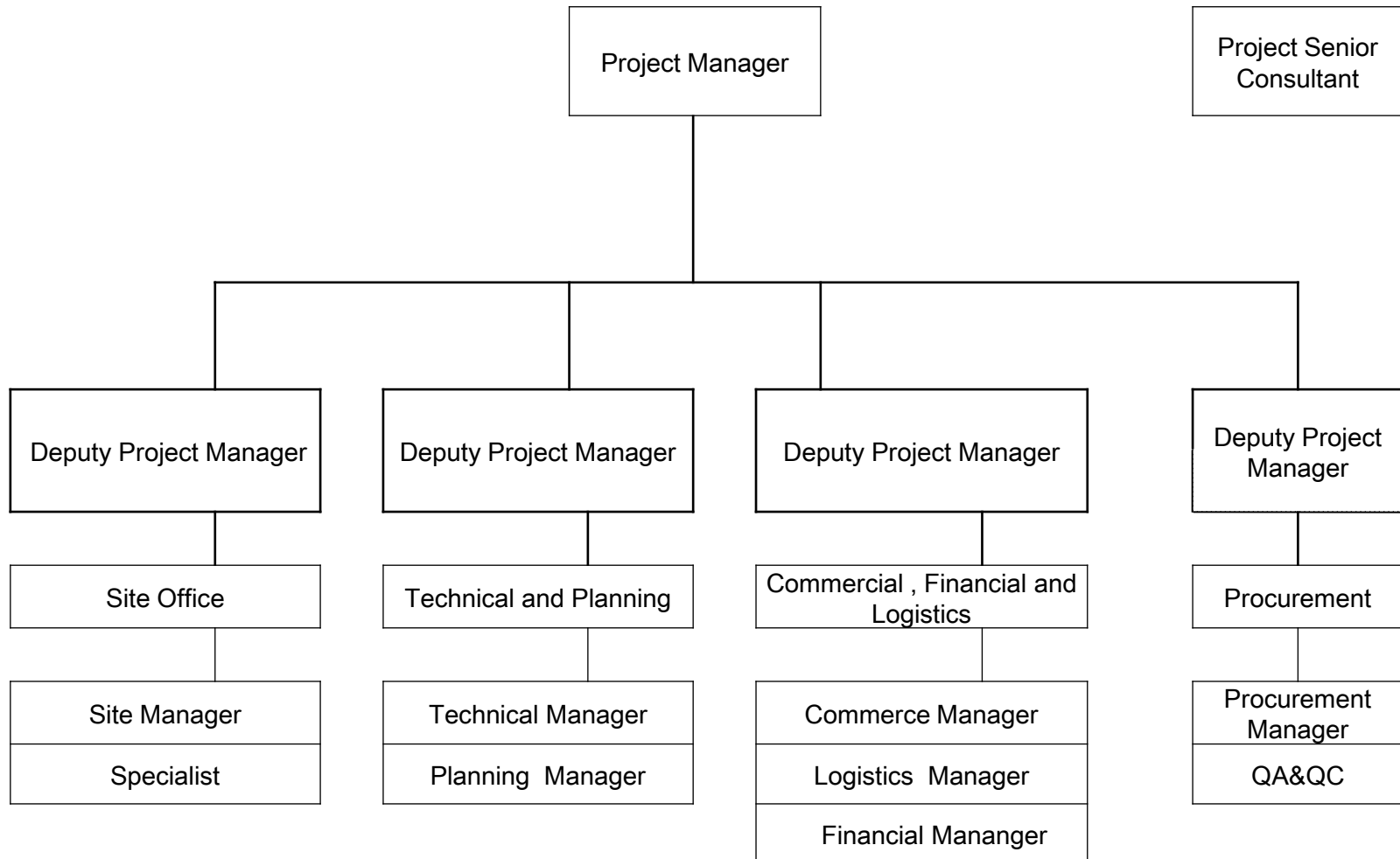
**Dongturbo Electric Company Ltd.(DTEC)** is an international corporation, with its headquarter in Chengdu, China, and manufacturing bases in Deyang and Kunming, China, mainly engaged in the manufacturing of power & electric equipments, power plant equipment supply, and export and import business. DTEC also has branches and joint venture in Malaysia, Thailand, and Philippine. Our business scope covers supply equipment and materials for thermal power including boiler, turbine, generator and their auxiliaries, BOP, electric and C& I etc.; spare parts supply and power plant overhaul and maintenance based on Dongfang, Shanghai, Harbin Group and Etc.



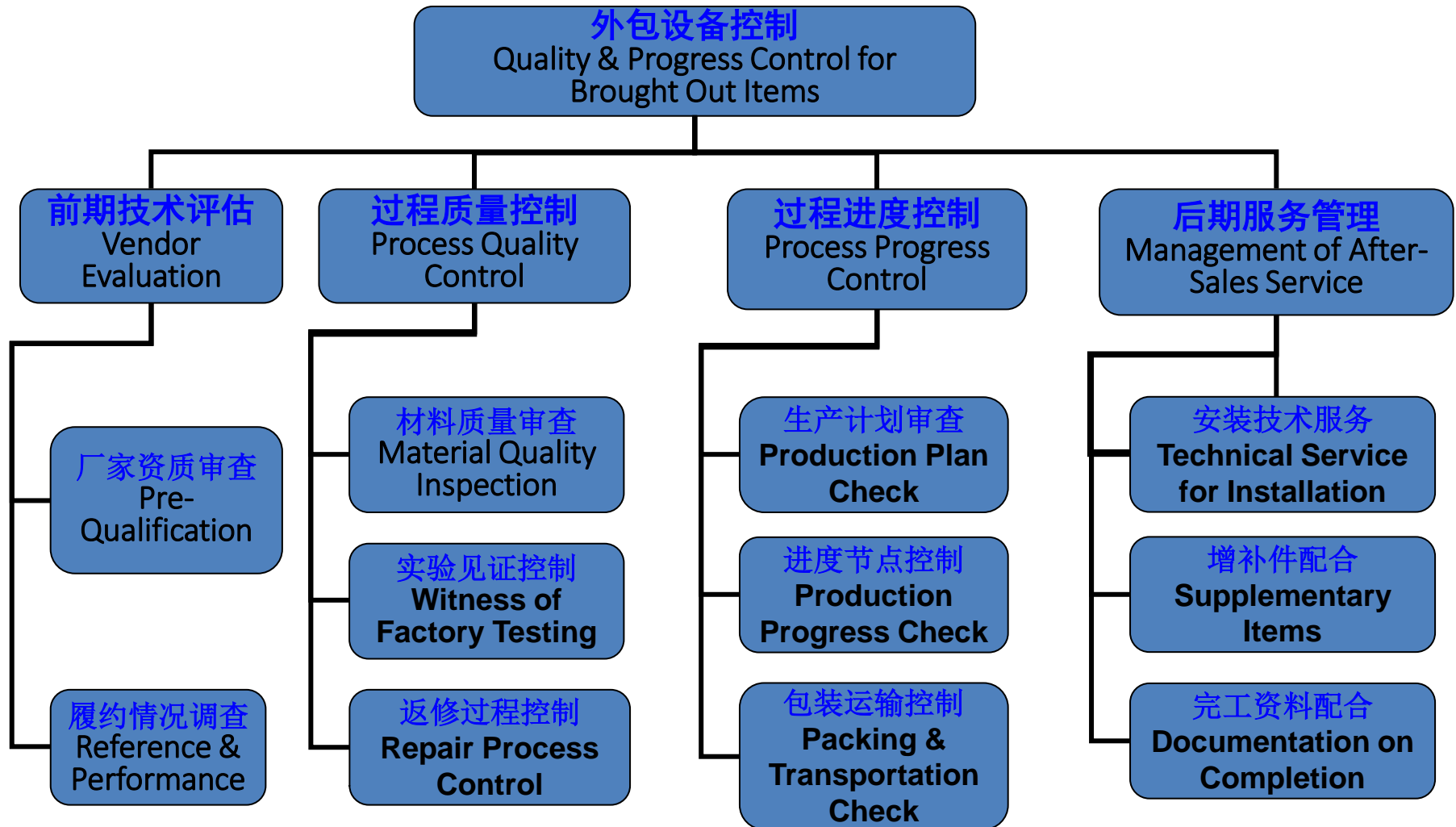
We are willing to grow with our customers, and we always believe our success can only rely on the success of our customer. We are always prepared to provide the best solution to our customer, provide the best service to our customer, and make the most gain to our customer.

# Capability as Completed Equipment Supplier

## 1. General Chart for Project Implementation



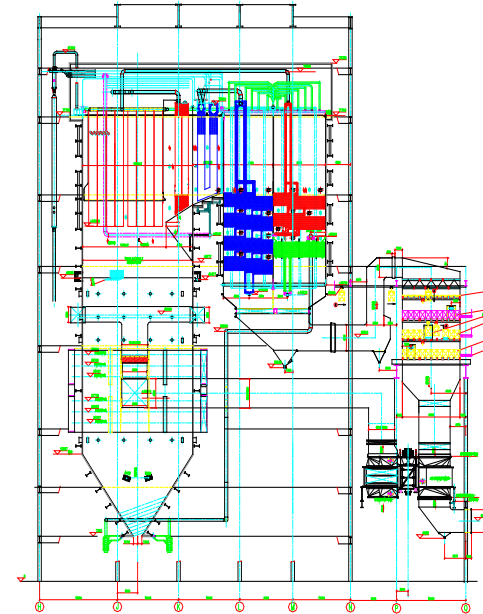
## 2. Quality & Progress Control for Completed Equipment Projects



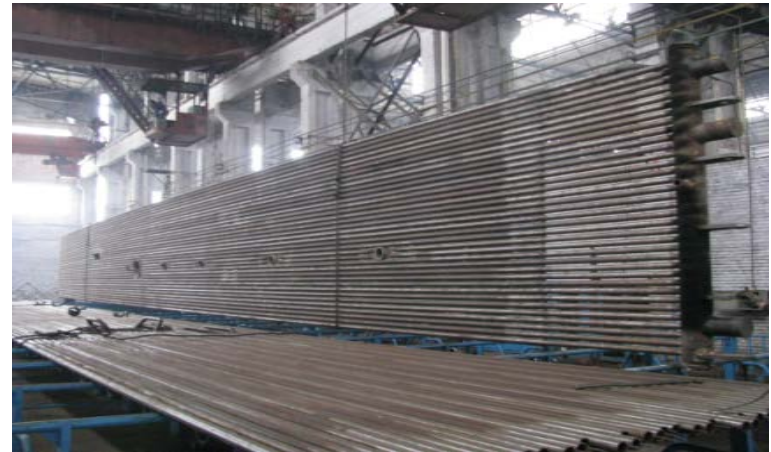


## Boiler and Auxiliaries Supply With Spare Parts

- Supply Dongfang, Shanghai, Harbin, Huaxi, Wuxi boiler
- Steam Flow From 130 t/h to 3000 t/h and pressure  
from 2.5 Mpa ~ 27.56 Mpa
- Supply components like as drum, water wall, economizer, reheater and superheater components to final customer and Dongfang, Harbin boiler etc.
- Supply HP heater and LP heater
- Boiler Rehabilitation & Retrofitting
- Spare parts supply for boiler and boiler island



## Water Wall Produce





## Serpentine Pipe Produce



## Header and Pressure Vessel Produce





## Drum



## High Pressure Heater

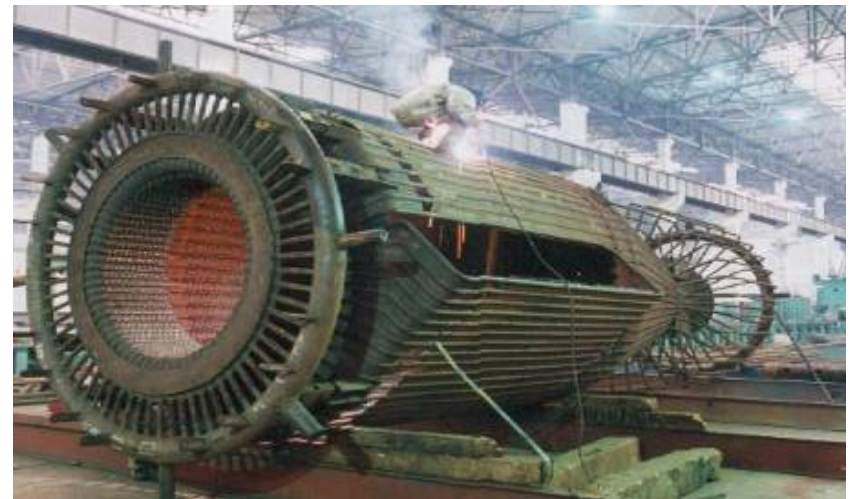
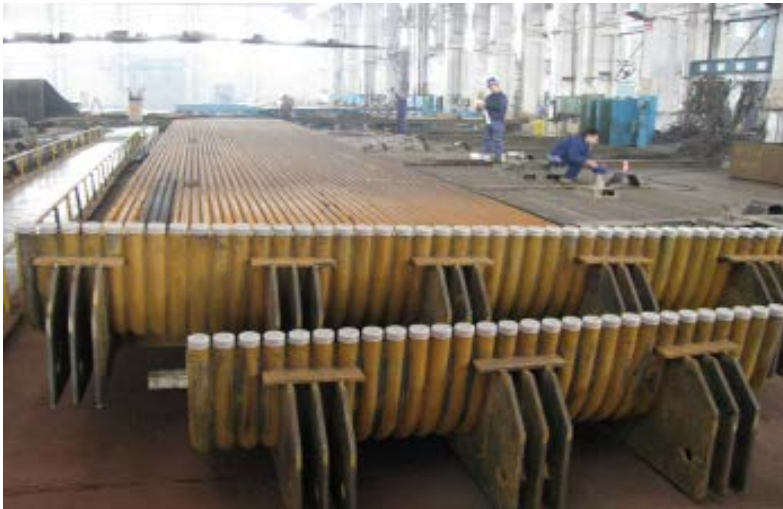




## Low Pressure Heater



## Water Wall for 300MW,600MW,1000MW Boiler







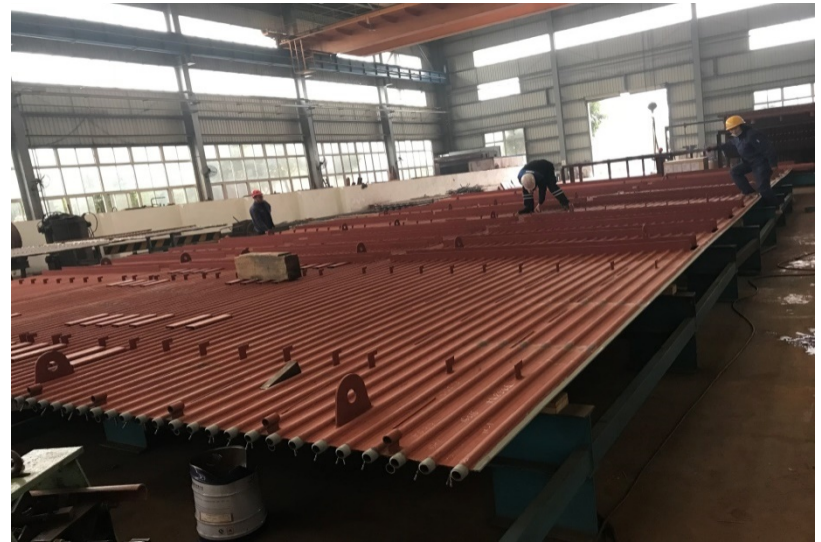




## Serpentine Pipe



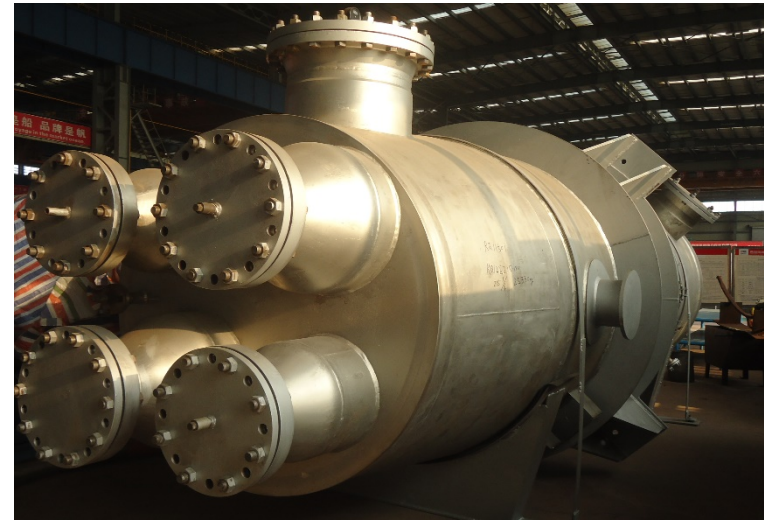








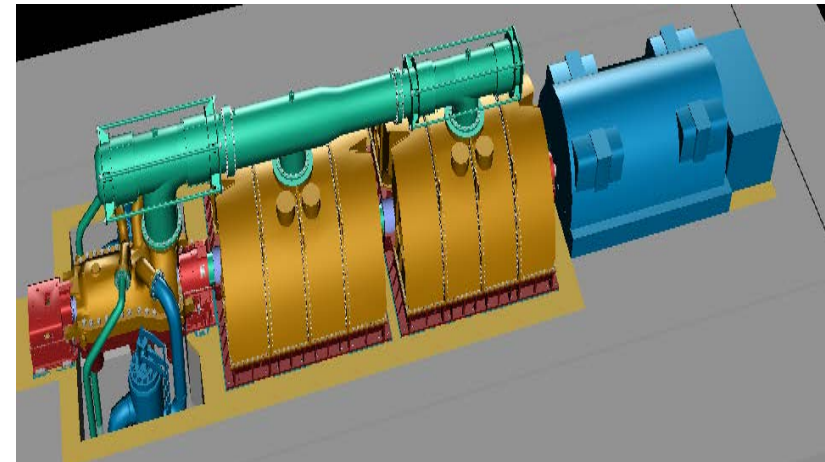
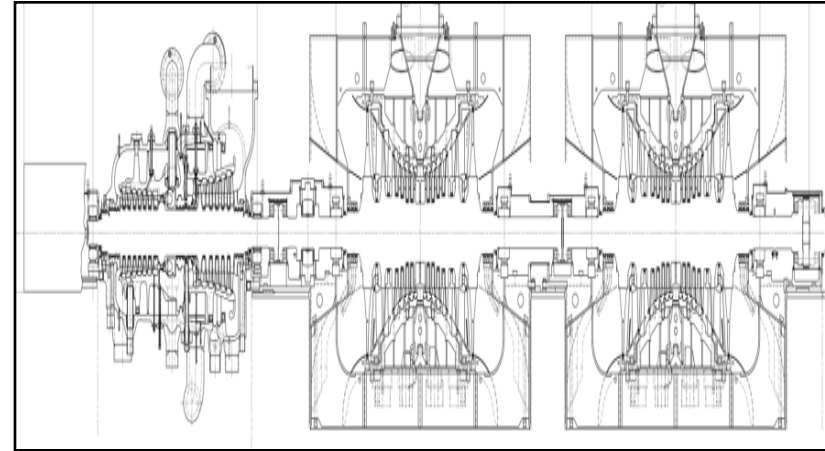
## Pressure Vessel



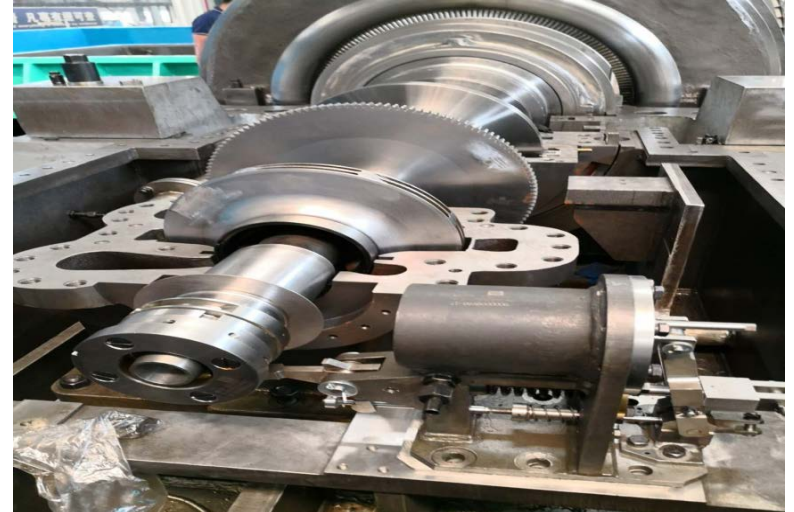
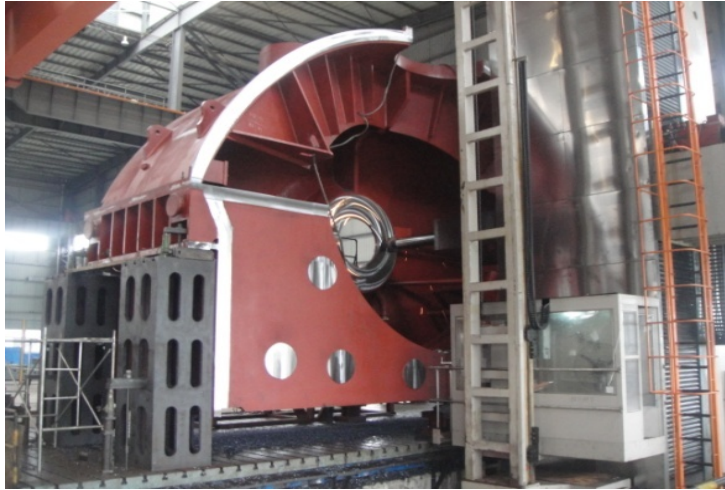


## Steam Turbine and Auxiliaries Supply With Spare Parts

- Supply Dongfang, Shanghai, Harbin, Nanjing,
- Jinan Steam Turbine and Generator.
- Steam Turbine Capacity from 25MW to 1000 MW
- Supply components and spare parts like as casing, diaphragm, rotor, blade, bearing, seal ring, MSV,
- GV with parts to final customer and Dongfang,
- Harbin turbine factory and etc.
- Supply condenser, DCS, DEH, TSI, lub. System,
- hydraulic control parts and etc.
- Steam Turbine and auxiliaries Rehabilitation & Retrofitting
- Spare parts supply for steam turbine and auxiliaries



## Casing and assembly

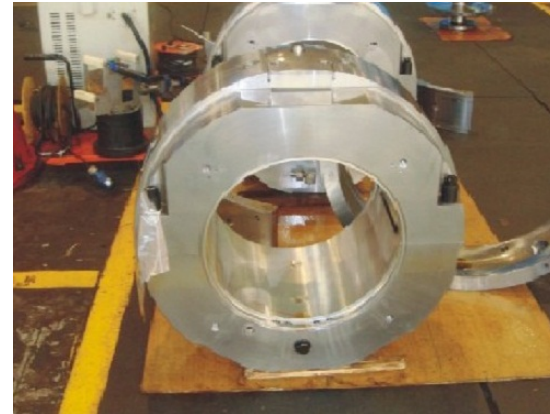




## Diaphragm



## Bearing and Pad

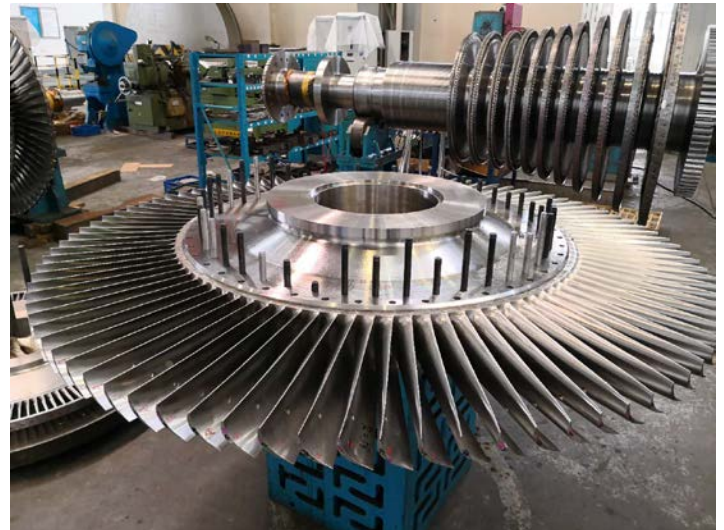
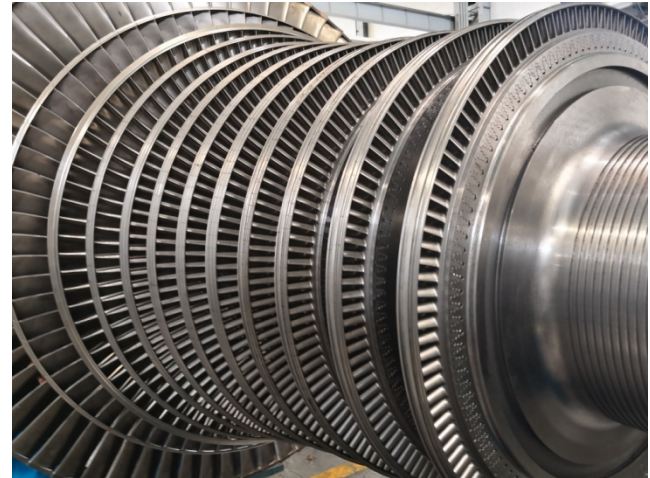




## Seal Ring and Oil Gland



## Rotor





# Blade

## 1. Manufacturing Equipments



Hamuel  
Seven-axis  
Five-linkage  
CNC

Mazak Horizontal  
CNC



## C.B. Ferrari 5-axis CNC machine center





Mori Seki milling  
turn center

LGMazak Vertical  
CNC

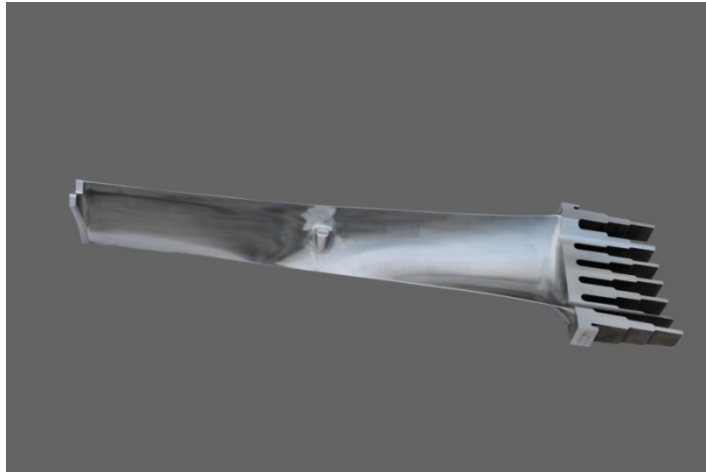


## Blade Workshop Work Site





## 2. Blade Products



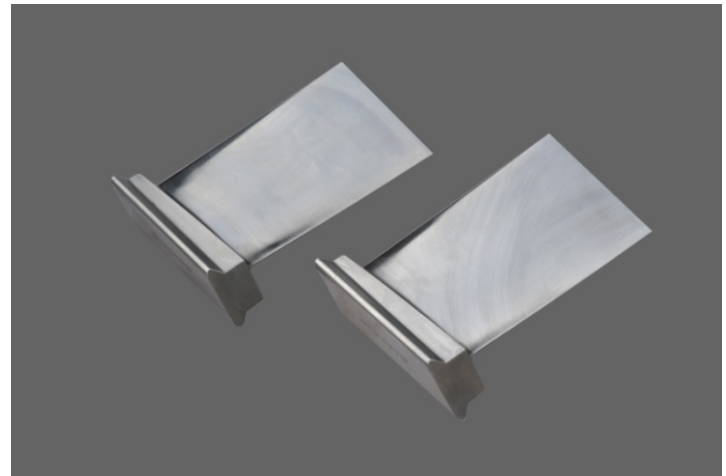
**600 MW turbine LP last stage of moving blade**



**300 MW turbine LP second last stage of moving blade**



**Gas turbine 1 stage stationary blade**



**Gas turbine 10 stage moving blade**

## Valve for Steam Turbine And Accessories



**Gas turbine 1 stage stationary blade**

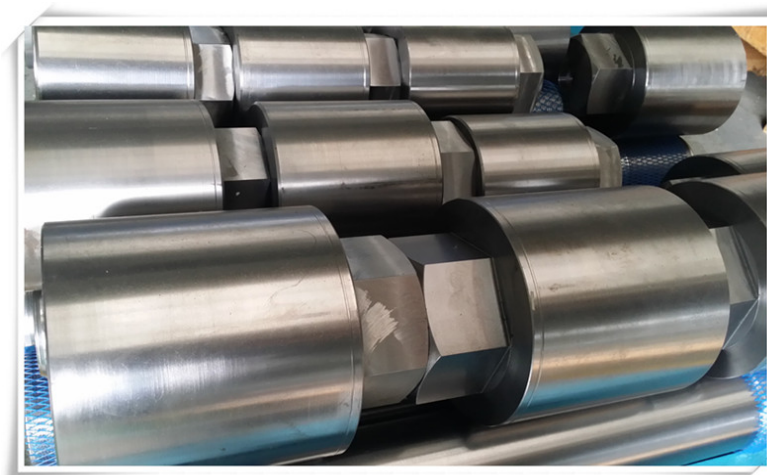
**Gas turbine 10 stage moving blade**

# Valve Accessories

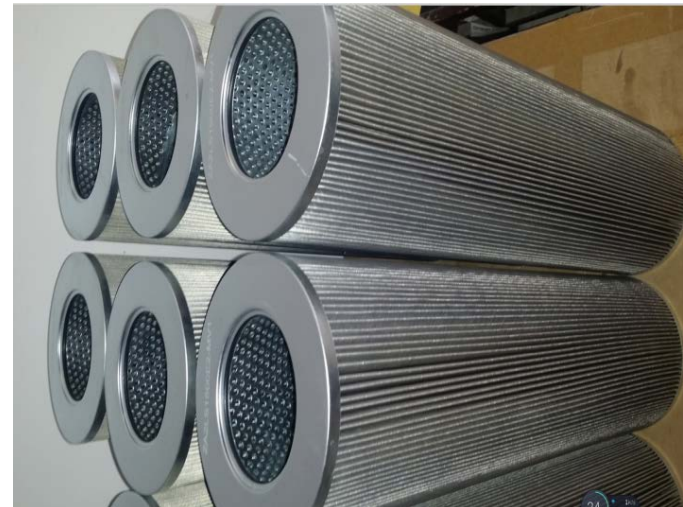
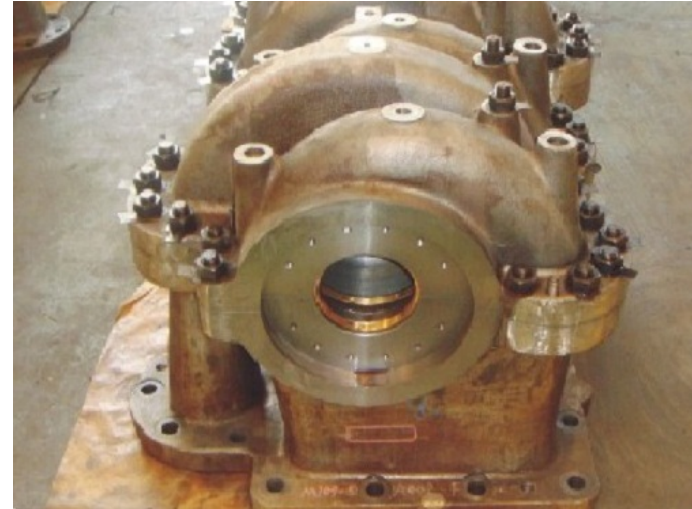




# Stud, Bolts and Nuts

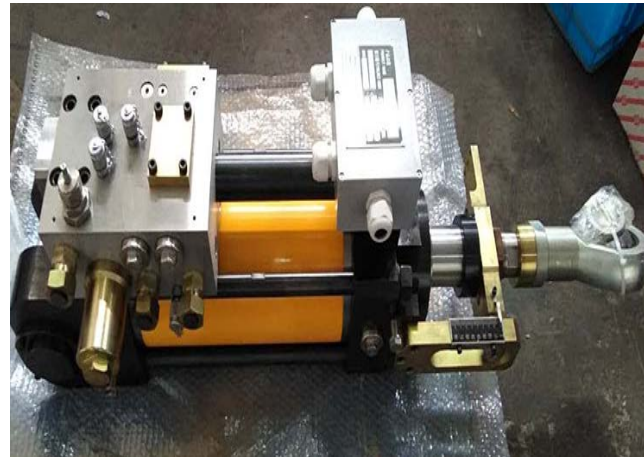


# Accessories For Lub. Oil System





# Accessories For Hydraulic Control System



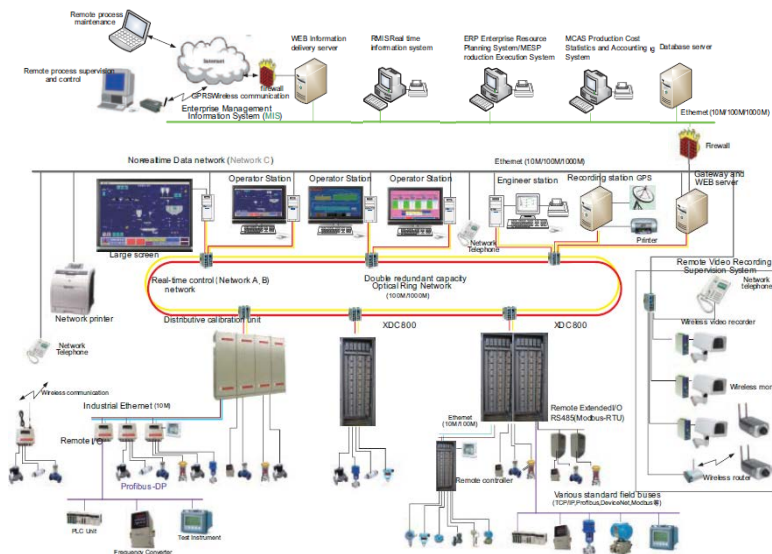
# Electric Control System



Manufacturing EH devices for turbine governing system etc.



Manufacturing controller, PS, IO modules for DEH and DCS.



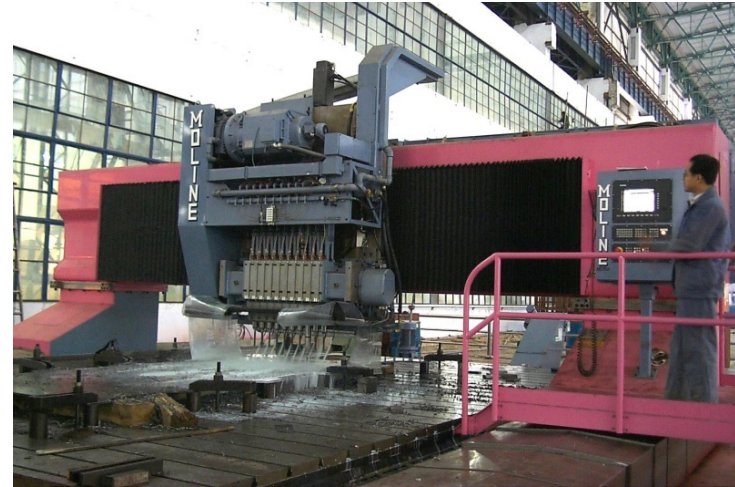
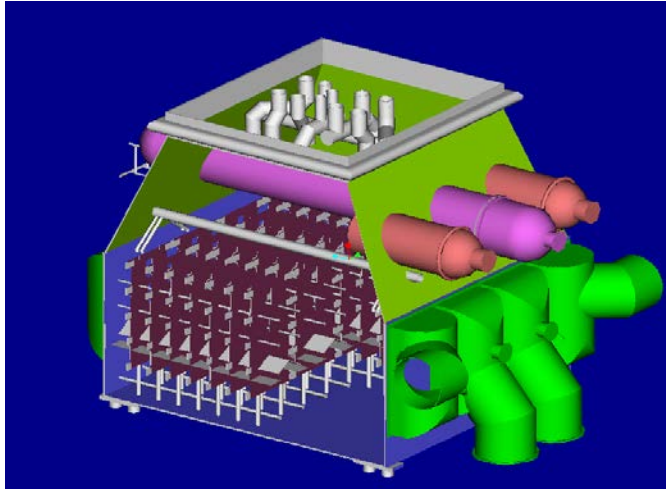


# Supervision System





# Condenser



# Overhaul and Parts Supply for Gas Turbine



**Overhauling of MS9001E**



# Overhaul and Parts Supply for Gas Turbine



**Overhauling of MS6001B**

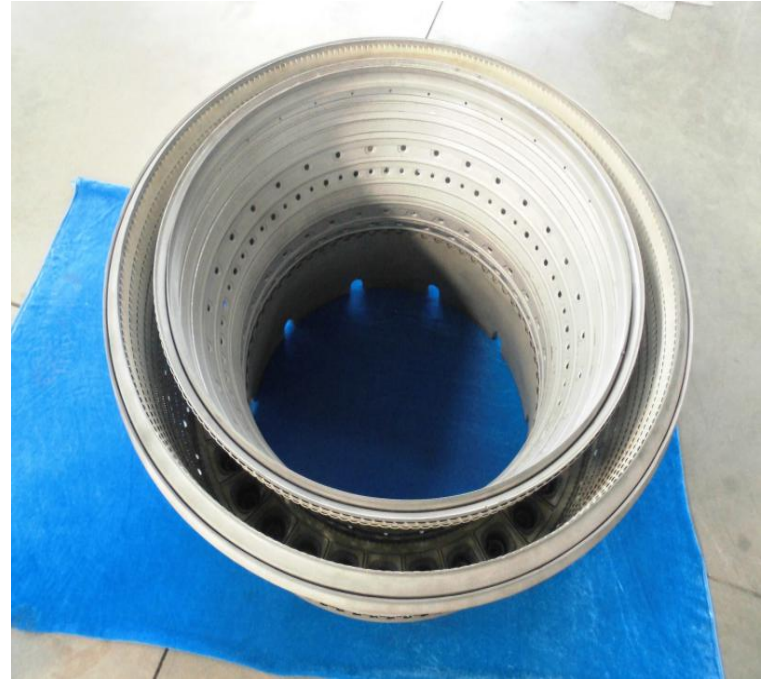


**Overhauling of MS5001**



**Overhauling of LM6000PA**

## Overhaul and Parts Supply for Gas Turbine



**Combustion chamber repairment of  
Gas Turbine LM2500+SAC**



## Overhaul and Parts Supply for Gas Turbine



**Transition section repairment of  
Gas Turbine MS5001B Mode**



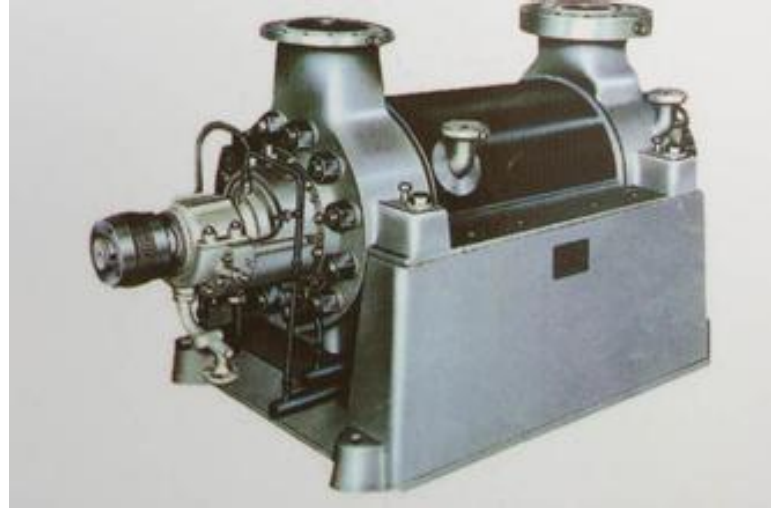
**Primary nozzle repairment of  
Gas Turbine MS6001B Mode**

# Overhaul and Parts Supply for Gas Turbine





# Boiler Feed Pump





**Dongturbo Electric Company Ltd.**